



INTERNATIONAL UNION
OF RAILWAYS

Lucie Anderton, Head of Sustainability, UIC

The Role of Rail in a Sustainable Mobility System





Transforming cities and communities

Cities will be less congested, safer and healthier places to live, better connecting people to businesses and opportunities



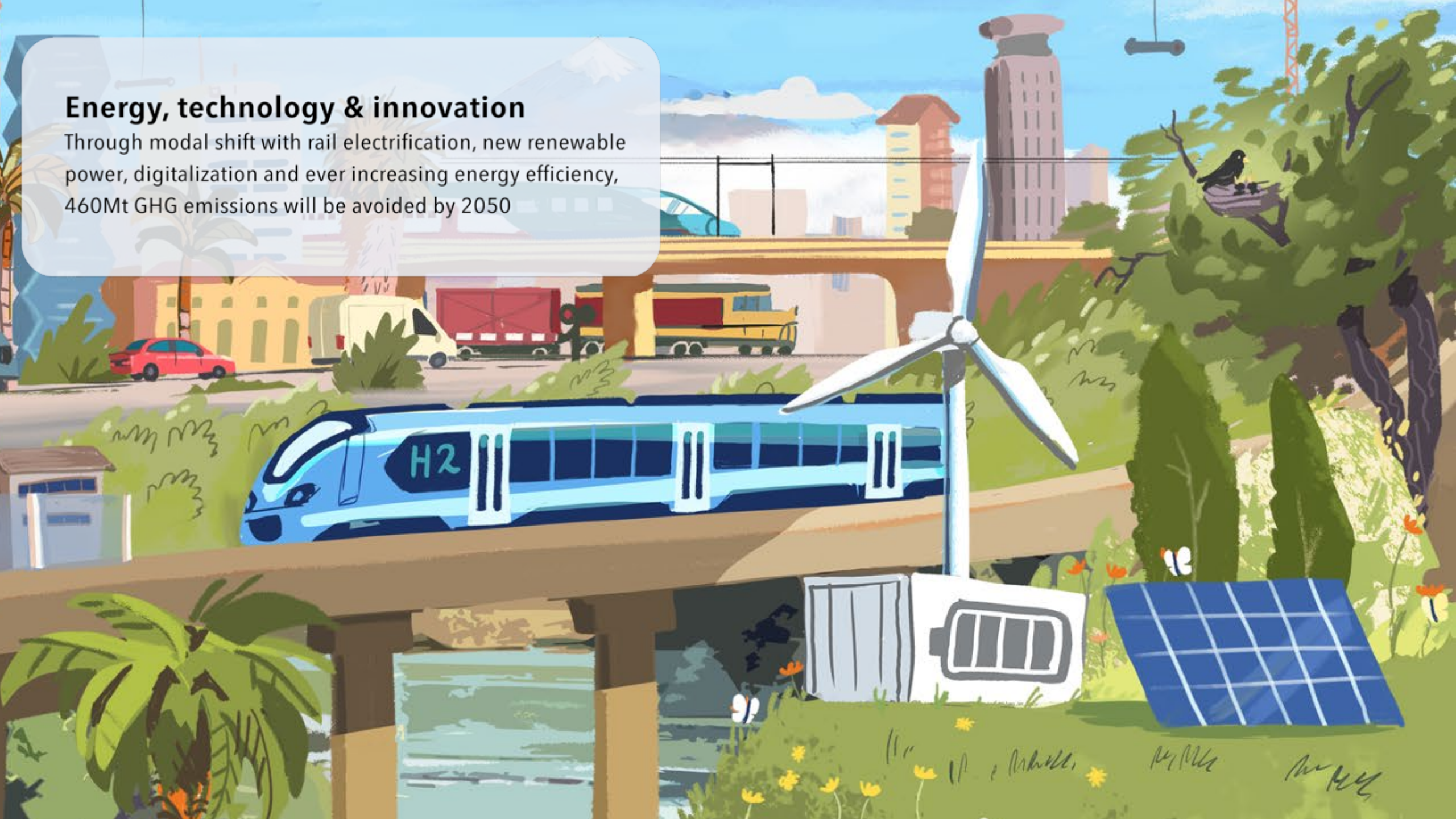
Inclusive transport system design in Buenos Aires

New, brighter lights, security cameras, and emergency kiosks will improve safety for women, LGBTQ+ individuals, and anyone else who may feel insecure in a large public space.

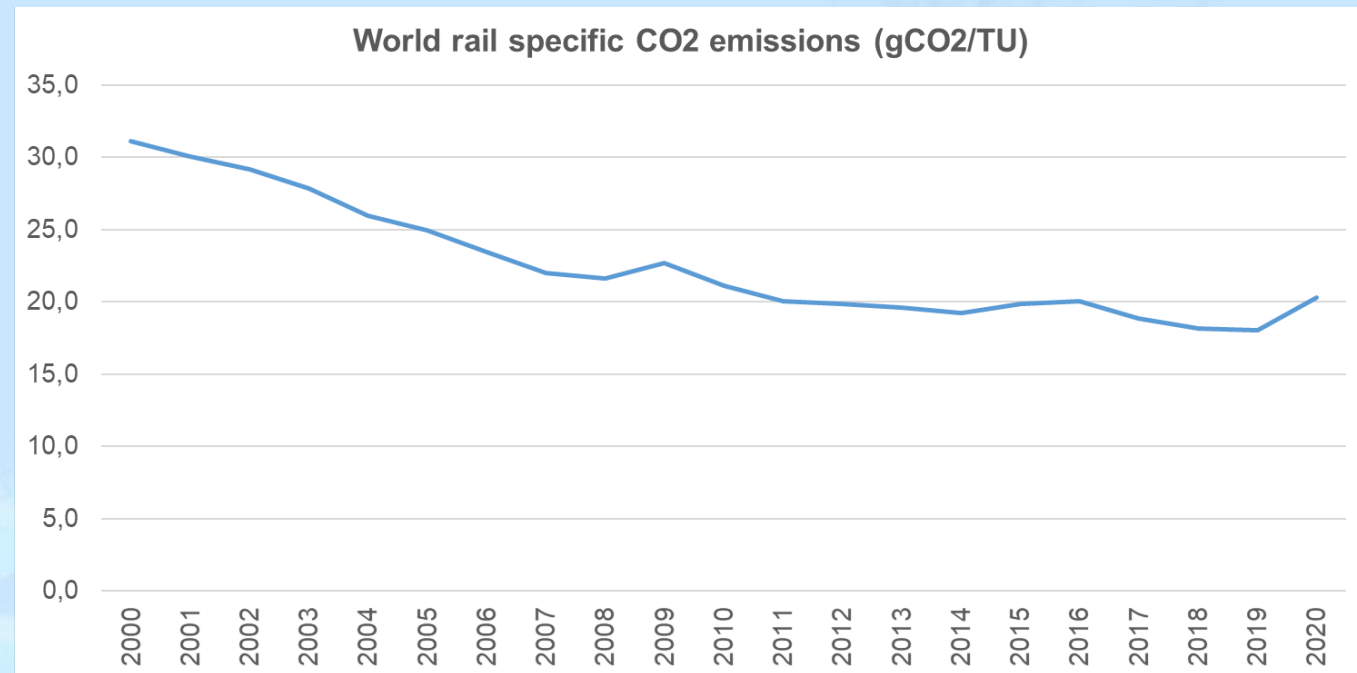
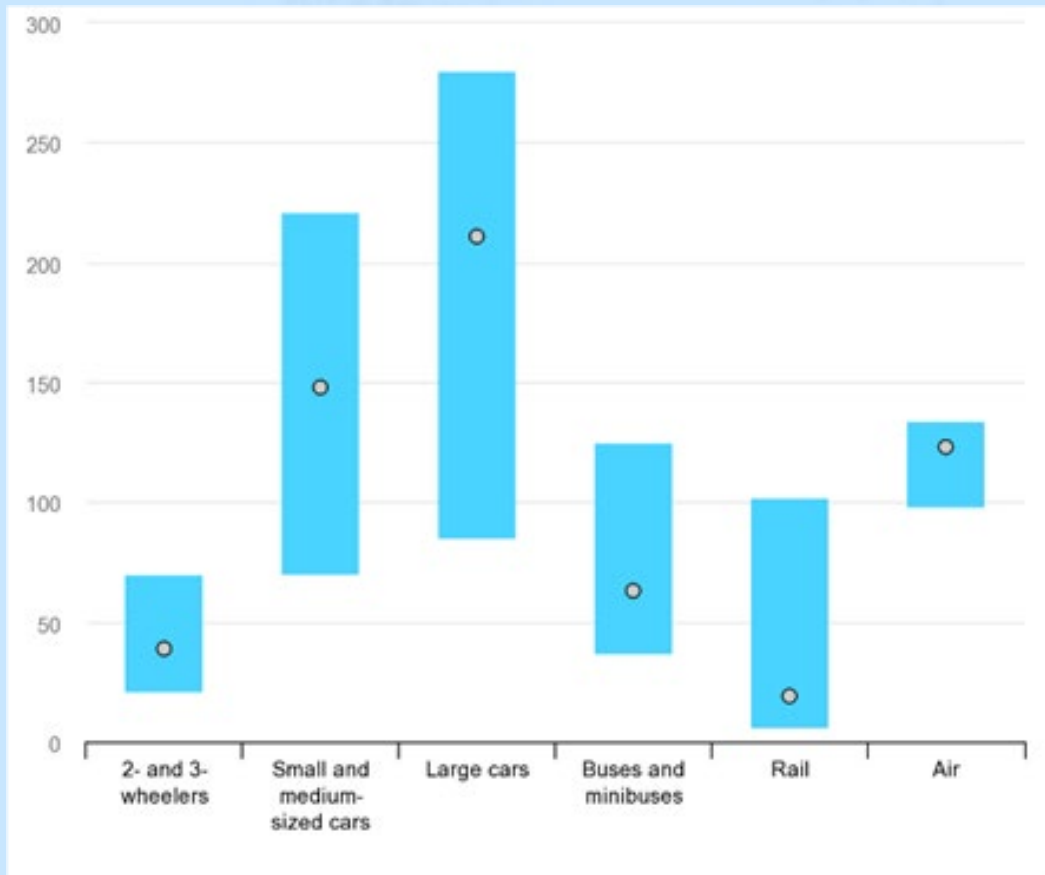
In Buenos Aires, 50% women rely on informal and public transport (versus 37% of men) 72% of women say they don't feel safe on these commutes

Energy, technology & innovation

Through modal shift with rail electrification, new renewable power, digitalization and ever increasing energy efficiency, 460Mt GHG emissions will be avoided by 2050



In Europe, **25% more energy efficient** in the last 15 years





The Ethio-Djibouti Railway

Hydro-electric powered

760km line

2 million
tonnes of goods per
year



avoiding emitting an estimated

144,000 tonnes
of CO2



Customer experience

By adapting services and infrastructure to a changing climate, improving punctuality, accessibility, security and quality, more people will choose rail for travel and logistics

Intermodality & seamless connection

With catchment management, multi-modal ticketing and stations, and digitalised logistics hubs, trains will become the backbone to an interconnected sustainable mobility system



Air+Rail

Innovative partnership, Delta Airlines and Belgin Trains, where passengers can purchase combined air and rail tickets.



Active travel Catchment

Encouraging walking and cycling is part of the overall strategy to promote Walk-Cycle-Ride as a greener and more sustainable transport system for Singapore. 200km of sheltered walkways have been added



The ÖBB Rail Cargo Group “Rolling

Road” combined transport mode has a positive impact on congestion and safety, since truck drivers are able to relax on board the train during the rail journey. Estimated saving of more than

20,000 tonnes of CO₂ since the beginning of 2022.



MoreTRAINS

Global Rail Vision 2030





MoreTRAINS
Global Rail Vision 2030





INTERNATIONAL UNION
OF RAILWAYS



MoreTRAINS

Global Rail Vision 2030